

## MODEL C24EA FLOOR SERIES ELECTRIC CONVECTION STEAMER ON CABINET BASE



### SPECIFICATIONS:

Two compartment electric convection steamer on cabinet base, Vulcan-Hart Model No. (C24EA6) (C24EA10). 304 series stainless steel exterior. Two stainless steel cooking compartments with coved interior corners. SuperHeated steam delivered from the 5 psi stainless steel steam generator with staged water fill, 2 inch clean out port and Smart Drain System (timed drain) with PowerFlush. Separate 60 minute timer with constant steam feature for each compartment. Heavy duty doors and door latch mechanisms. Stainless steel water resistant cabinet base with stainless steel enclosed bottom. 6" adjustable stainless steel legs with flanged feet. Power connection requires 208-240 volt, 50/60 Hz, 1-3 phase. Split water line connection. Treated and untreated water connections. 1 1/2" NPT drain connection.

### Exterior dimensions:

- 6 pan: 24"w x 35.4"d x 63.7"h on 6" legs.
- 10 pan: 24"w x 35.4"d x 73.4"h on 6" legs.

U L listed. Classified by U L to NSF Std. #4.

- C24EA6** 6 pan capacity
- C24EA10** 10 pan capacity

### STANDARD FEATURES

- 304 series stainless steel exterior.
- Two stainless steel cooking compartments with coved interior corners.
- Stainless steel steam generator with staged water fill, 2 inch clean out port and Smart Drain System (timed drain) with PowerFlush.
- Separate 60 minute timer with constant steam feature for each compartment.
- Semi-automatic deliming cycle control.
- Heavy duty doors and door latch mechanisms.
- Stainless steel water resistant cabinet base with enclosed bottom.
- 6" adjustable stainless steel legs with flanged feet.
- Smart cycle power management heater system.
- Power connection requires 208-240 volt, 50/60 Hz, 1-3 phase.
- Split water line connection. Treated and untreated water connections. 1 1/2" NPT drain connection.
- One year limited parts and labor warranty.

### OPTIONS

- 480 volt, 50/60 Hz, 3 phase.
- Second year extended limited parts and labor warranty contract.
- Steamer Security Package, includes controls protected by lockable cover, perforated flue cover, security fasteners & tack-welds.

### ACCESSORIES

- 12" x 20" stainless steel pans:
  - 1" deep (solid)(perforated) Qty. \_\_\_\_.
  - 2 1/2" deep (solid)(perforated) Qty. \_\_\_\_.
  - 4" deep (solid)(perforated) Qty. \_\_\_\_.
- Stainless steel pan cover. Qty. \_\_\_\_.
- Removable sliding self. Qty. \_\_\_\_.
- Water treatment system.



# MODEL C24EA FLOOR SERIES

## ELECTRIC CONVECTION STEAMER ON CABINET BASE

### SERVICE CONNECTIONS:

**ELECTRICAL CONNECTION:** Single point supply 1 1/8" (29 mm) dia. (3/4" conduit).

**DRAIN:** Condenser box, compartment and generator, 1 1/2" NPT. (Provide an open air gap type drain within 12" of condenser box and for best results at a distance so steam vapors will not enter the steamer from underneath the control area. Do not connect solidly to any drain connection.)

**GENERATOR WATER SUPPLY:** 3/4" (19 mm) male hose thread to generator, cold water flow rate .5 gpm @ minimum 25 to maximum 50 psi. (170-345 kPa).

**CONDENSING WATER SUPPLY:** 3/4" (19 mm) male hose thread to condenser, cold water flow rate .5 gpm @ minimum 25 to maximum 50 psi. (170-345 kPa).

### WATER QUALITY STATEMENT:

The fact that a water supply is potable is no guarantee that it is suitable for steam generation. Your water supply must be within these general guidelines:

<b>SUPPLY PRESSURE</b>	20 - 60 psig
<b>HARDNESS*</b>	less than 3 grains
<b>SILICA</b>	less than 13 ppm
<b>TOTAL CHLORIDE</b>	less than 4.0 ppm
<b>pH RANGE</b>	7-8
<b>UN-DISSOLVED SOLIDS</b>	less than 5 microns
* 17.1 ppm = 1 grain of hardness	

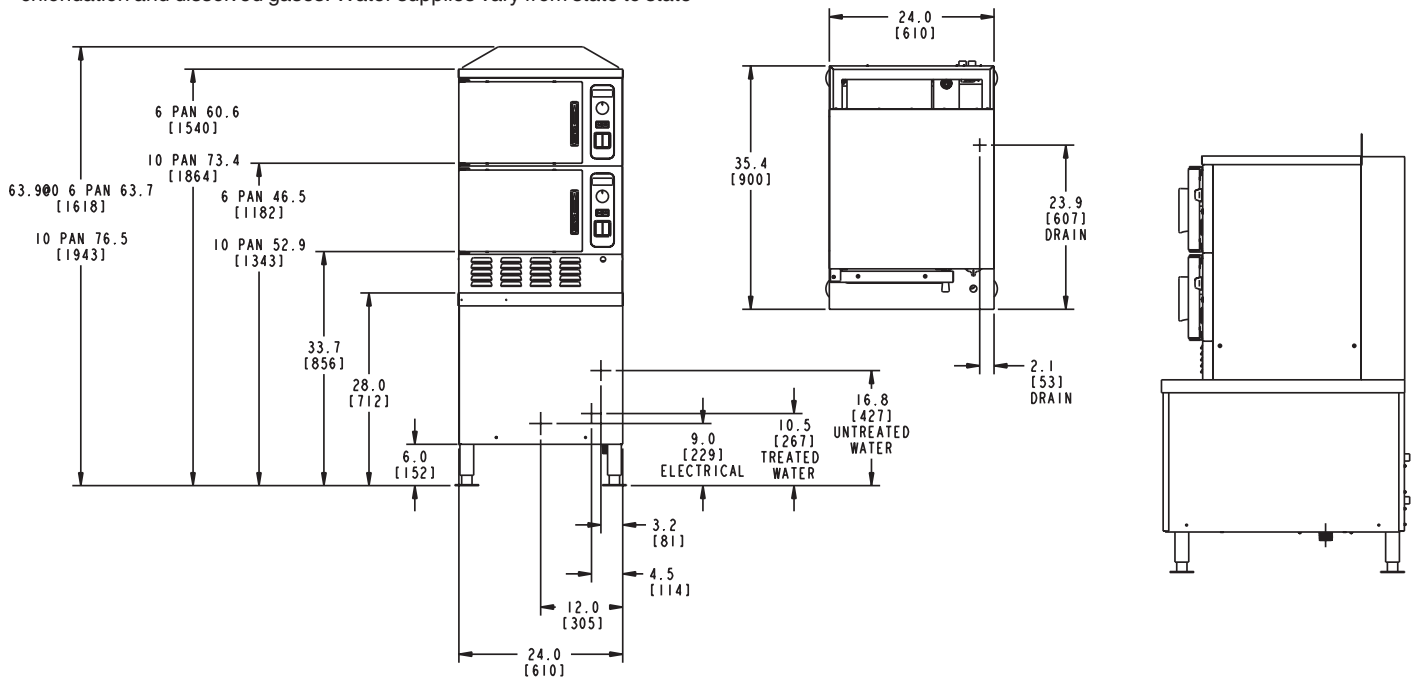
Other factors affecting steam generation are iron content, amount of chloridation and dissolved gases. Water supplies vary from state to state

and from locations within a state. Therefore it is necessary that the local water treatment specialist be consulted before the installation of any steam generating equipment.

### NOTE:

- Dimensions which locate the above connections have a tolerance of + or -3" (+ or -75 mm). Normal dimensions are in inches. Dimensions in ( ) are in millimeters.
- Installation of backflow preventers, vacuum breakers and other specific code requirements is the responsibility of the owner and installer. It is the responsibility of the owner and installer to comply with local codes.
- Plastic drains are not recommended due to inherent limited temperatures of the plastic. Generator purge temperatures may exceed 180°F. The installer may be required to provide means to reduce generator purge water temperature to be that of the condensate temperature of 140°F or below.
- This appliance is manufactured for commercial installation only and is not intended for home use.

COMPARTMENT PAN CAPACITY				
MODEL	1"	2 1/2"	4"	6"
C24EA6	6	3	2	1
C24EA10	10	5	3	2



**NOTE:** 3ø is an unbalanced load, and amps listed is the max on any leg. Refer to the Installation and Operation Manual for further details.

MODEL	Phase	208 V		240 V		480 V	
		kW	Amps	kW	Amps	kW	Amps
C24EA6	1ø	17.2	81.25	17.2	79.1	17.2	N/A
	3ø	17.2	48.2	17.2	51.3	17.2	21.4
C24EA10	1ø	25.6	121.2	25.6	110.4	25.6	N/A
	3ø	25.6	71.2	25.6	67	25.6	31.8

**NOTE:** In line with its policy to continually improve its products, Vulcan-Hart reserves the right to change materials and specifications without notice.